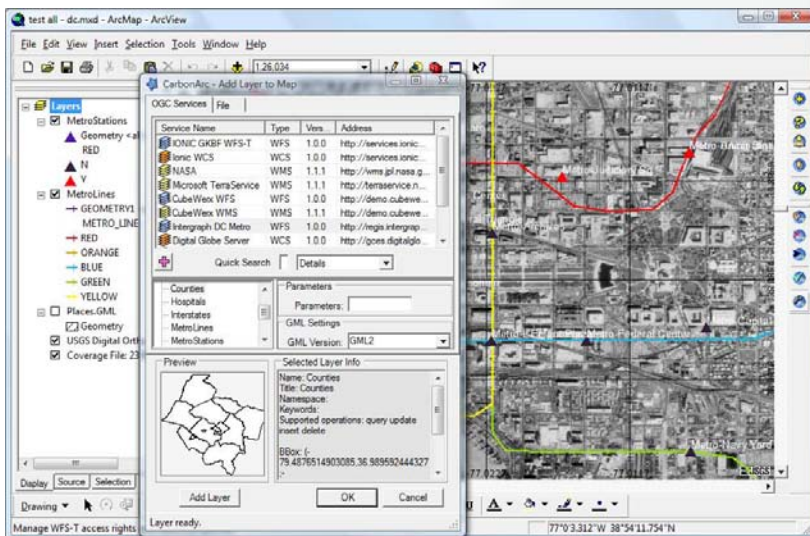




CarbonArc® PRO for ArcGIS®

To meet today's government and security challenges geospatial data and services must be accessible to everyone, everywhere. By implementing the latest standards for interoperability, SDI 1.0, CarbonArc® PRO lets users at all levels of government find and access geospatial data and services crucial to mission success - regardless of the source, production element or software vendor providing it.



For more information contact
info@thecarbonproject.com

Feature Highlights

- Provides geospatial interoperability for ESRI ArcGIS 9.2
- Supports OGC® SDI 1.0 (WMS, WFS, WFS-T, WCS, GML, GMLsf, Filter Encoding, CS-W)
- Supports WFS Transactions so you can update your data 'on-the-fly'
- Implements advanced Filter Encodings for easy, selective access to geospatial data
- Easily integrated into Service Oriented Architectures (SOA)



The Carbon Project

Web: www.TheCarbonProject.com
E-mail: info@TheCarbonProject.com